

# BWALEGRA

## Studio

Stan Br. Unit No. **101**

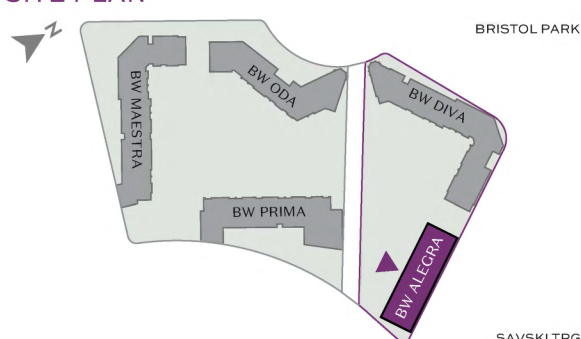
	DIMENZIJE DIMENSIONS
Površina Stana Apartment Area	28.93 m <sup>2</sup>
Površina Terasa Terrace Area	5.42 m <sup>2</sup>
Ukupna Površina Total Area	34.35 m <sup>2</sup>



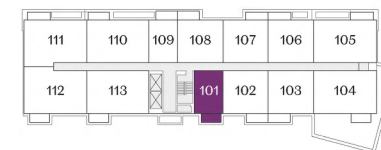
MASTER PLAN



SITE PLAN



LEVEL PLAN



Napomena: Svi materijali, dimenzije i crteži su okvirni. Kalkulacija površina unutrašnjeg i spoljašnjeg prostora urađena je u skladu sa važećim standardom (SRPS U.C2.100:2002) i predstavlja neto površinu stambene jedinice.

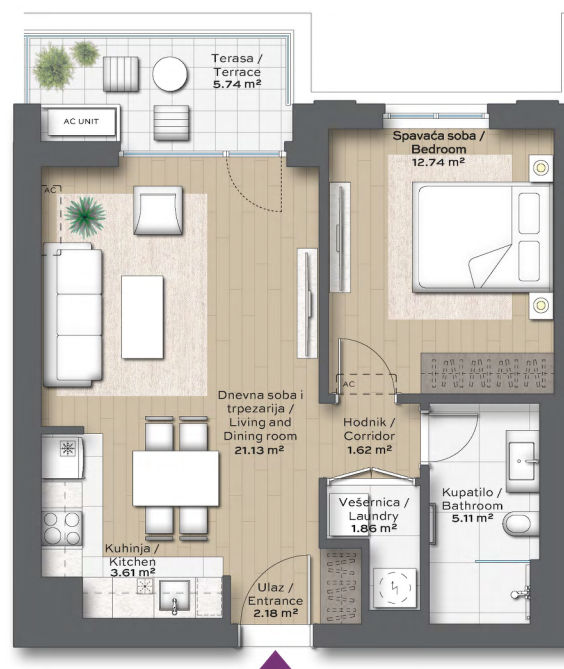
Disclaimer: All materials, dimensions and drawings are approximate. Calculation of internal and external area is fully compliant with local standards (SRPS U.C2.100:2002) and as such it represents the net area of the unit.

# BWALEGRA

## One Bedroom

Stan Br. Unit No. 102

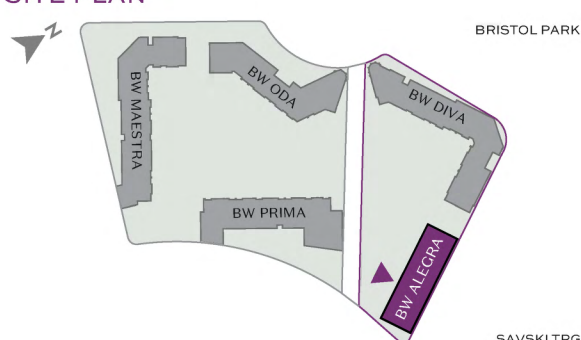
	DIMENZIJE DIMENSIONS
Površina Stana Apartment Area	48.24 m <sup>2</sup>
Površina Terasa Terrace Area	5.74 m <sup>2</sup>
Ukupna Površina Total Area	53.98 m <sup>2</sup>



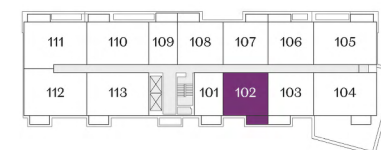
MASTER PLAN



SITE PLAN



LEVEL PLAN



Napomena: Svi materijali, dimenzije i crteži su okvirni. Kalkulacija površina unutrašnjeg i spoljašnjeg prostora urađena je u skladu sa važećim standardom (SRPS U.C2.100:2002) i predstavlja neto površinu stambene jedinice.

Disclaimer: All materials, dimensions and drawings are approximate. Calculation of internal and external area is fully compliant with local standards (SRPS U.C2.100:2002) and as such it represents the net area of the unit.

Oznaka stana / Apartment code: ALE-102

# BWALEGRA

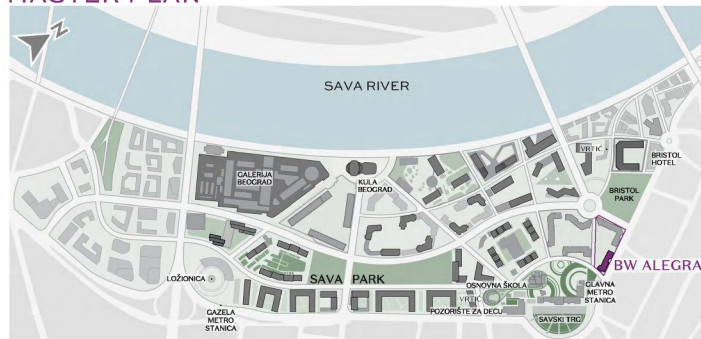
## One and a Half Bedroom

Stan Br. Unit No. **104**

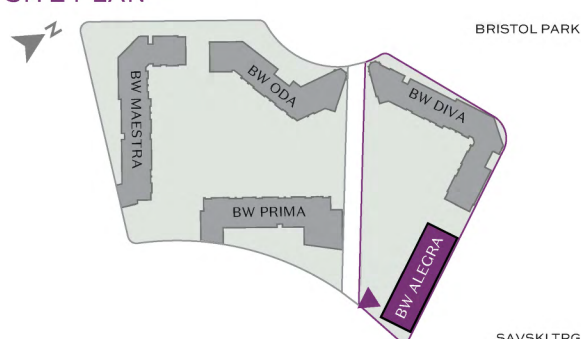
	DIMENZIJE DIMENSIONS
Površina Stana Apartment Area	66.26 m <sup>2</sup>
Površina Terase Terrace Area	5.42 m <sup>2</sup>
Ukupna Površina Total Area	71.68 m <sup>2</sup>



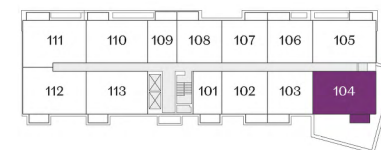
MASTER PLAN



SITE PLAN



LEVEL PLAN



Napomena: Svi materijali, dimenzije i crteži su okvirni. Kalkulacija površina unutrašnjeg i spoljašnjeg prostora urađena je u skladu sa važećim standardom (SRPS U.C2.100:2002) i predstavlja neto površinu stambene jedinice.

Disclaimer: All materials, dimensions and drawings are approximate. Calculation of internal and external area is fully compliant with local standards (SRPS U.C2.100:2002) and as such it represents the net area of the unit.

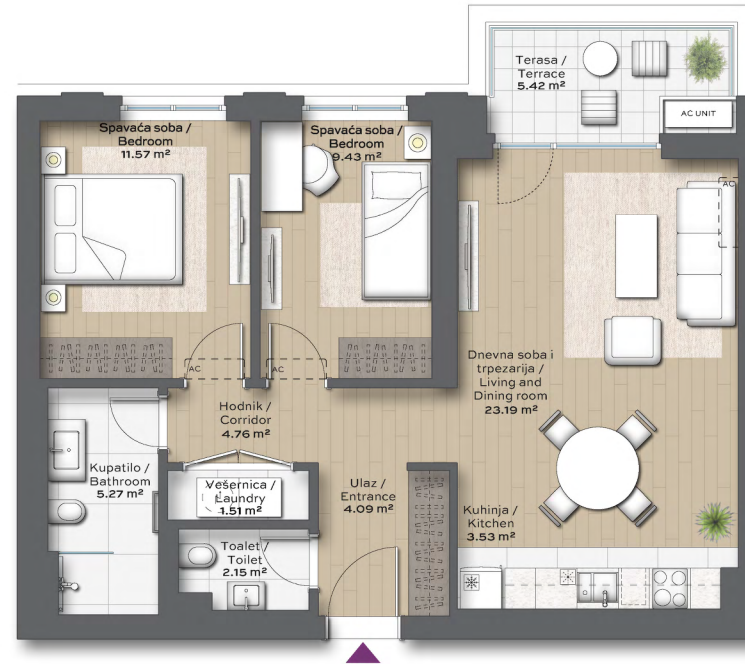
Oznaka stana / Apartment code: **ALE-103**

# BW ALEGRA

## One and a Half Bedroom

Stan Br. Unit No. **113**

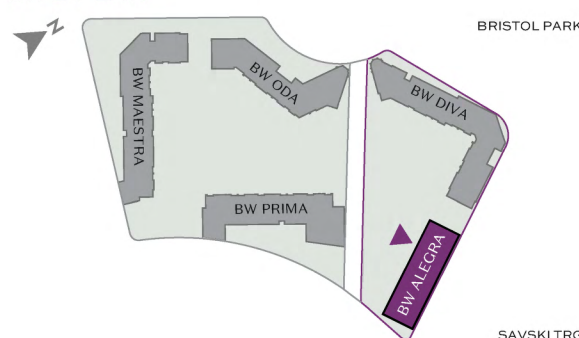
	DIMENZIJE DIMENSIONS
Površina Stana Apartment Area	65.48 m <sup>2</sup>
Površina Terasa Terrace Area	5.42 m <sup>2</sup>
Ukupna Površina Total Area	70.90 m <sup>2</sup>



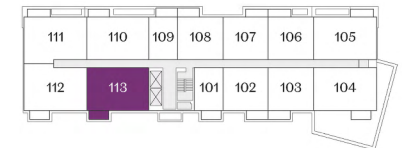
MASTER PLAN



SITE PLAN



LEVEL PLAN



Napomena: Svi materijali, dimenzije i crteži su okvirni. Kalkulacija površina unutrašnjeg i spoljašnjeg prostora urađena je u skladu sa važećim standardom (SRPS U.C2.100:2002) i predstavlja neto površinu stambene jedinice.

Disclaimer: All materials, dimensions and drawings are approximate. Calculation of internal and external area is fully compliant with local standards (SRPS U.C2.100:2002) and as such it represents the net area of the unit.

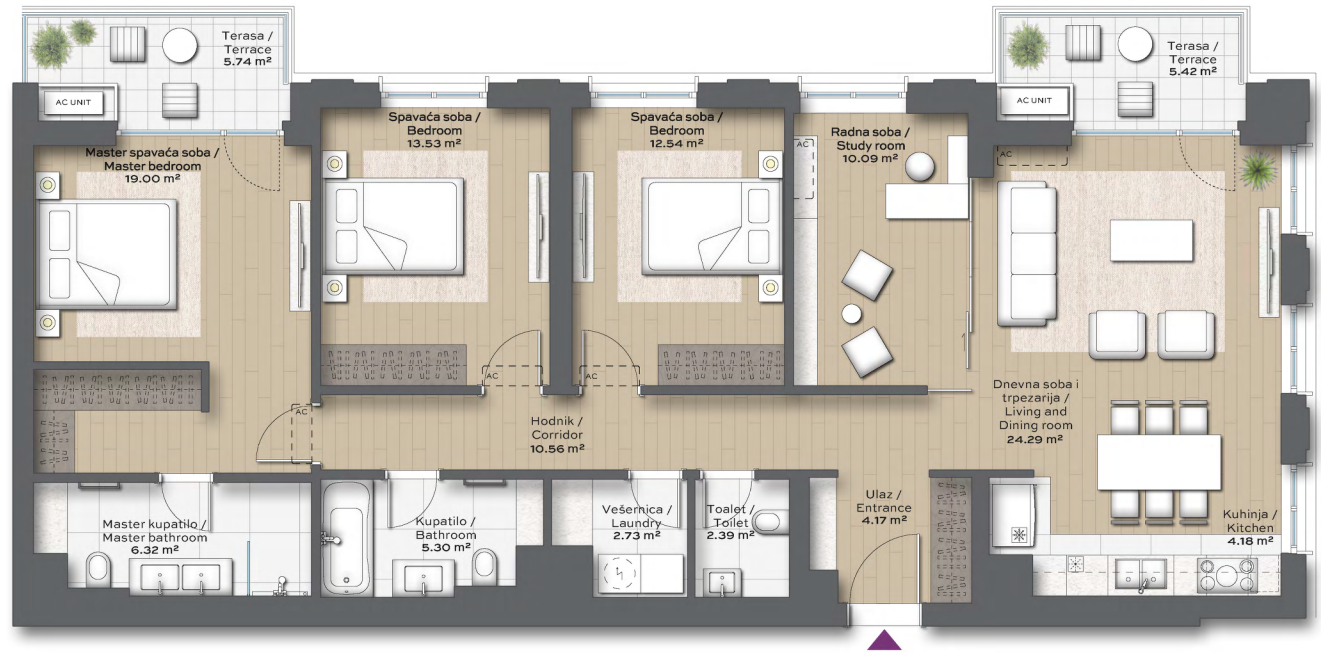
# BW ALEGRA

## Four Bedroom

Stan Br. Unit No. **703**

### DIMENZIJE DIMENSIONS

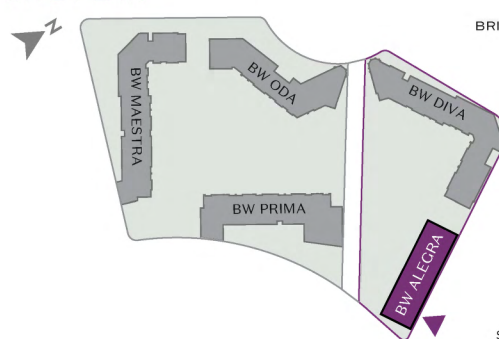
Površina Stana Apartment Area	115.10 m <sup>2</sup>
Površina Terase Terrace Area	11.16 m <sup>2</sup>
Ukupna Površina Total Area	126.26 m <sup>2</sup>



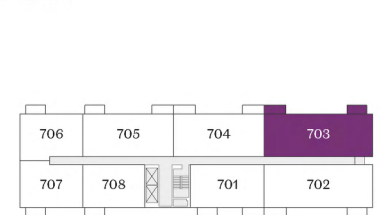
MASTER PLAN



SITE PLAN



LEVEL PLAN

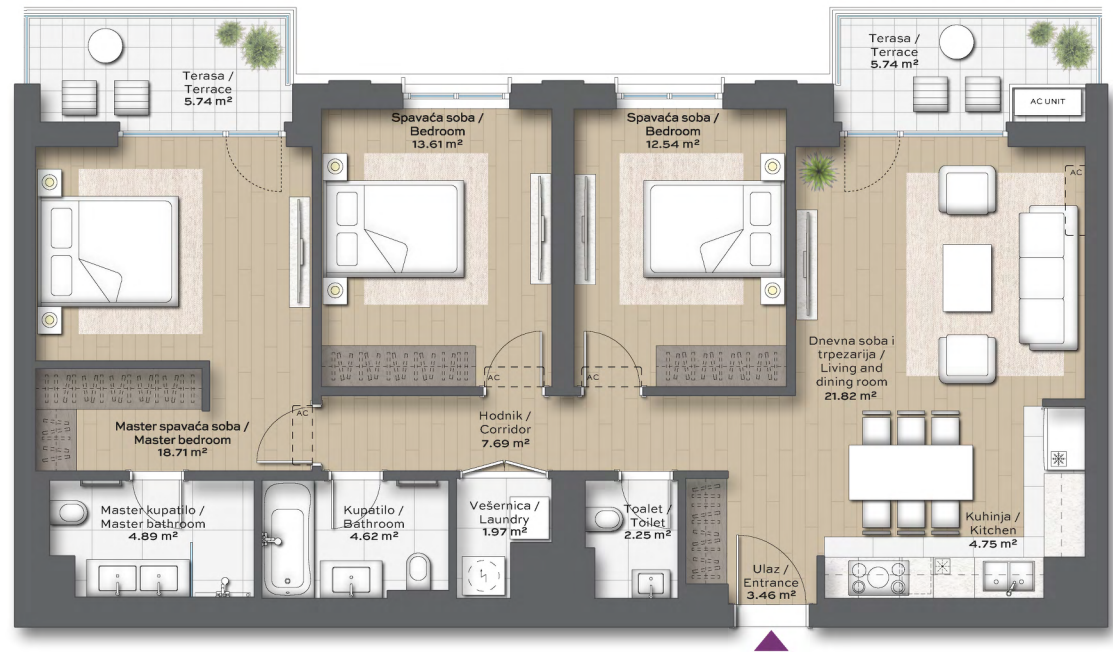


Napomena: Svi materijali, dimenzije i crteži su okvirni. Kalkulacija površina unutrašnjeg i spoljašnjeg prostora urađena je u skladu sa važećim standardom (SRPS U.C2.100:2002) i predstavlja neto površinu stambene jedinice.  
Disclaimer: All materials, dimensions and drawings are approximate. Calculation of internal and external area is fully compliant with local standards (SRPS U.C2.100:2002) and as such it represents the net area of the unit.

# BW ALEGRA

## Three Bedroom Stan Br. Unit No. 804

	DIMENZIJE DIMENSIONS
Površina Stana Apartment Area	96.29 m <sup>2</sup>
Površina Terase Terrace Area	11.48 m <sup>2</sup>
Ukupna Površina Total Area	107.77 m <sup>2</sup>



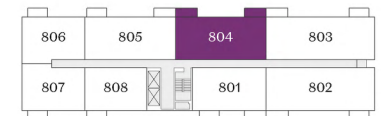
MASTER PLAN



SITE PLAN



LEVEL PLAN



Napomena: Svi materijali, dimenzije i crteži su okvirni. Kalkulacija površina unutrašnjeg i spoljašnjeg prostora urađena je u skladu sa važećim standardom (SRPS U.C2.100:2002) i predstavlja neto površinu stambene jedinice.  
Disclaimer: All materials, dimensions and drawings are approximate. Calculation of internal and external area is fully compliant with local standards (SRPS U.C2.100:2002) and as such it represents the net area of the unit.

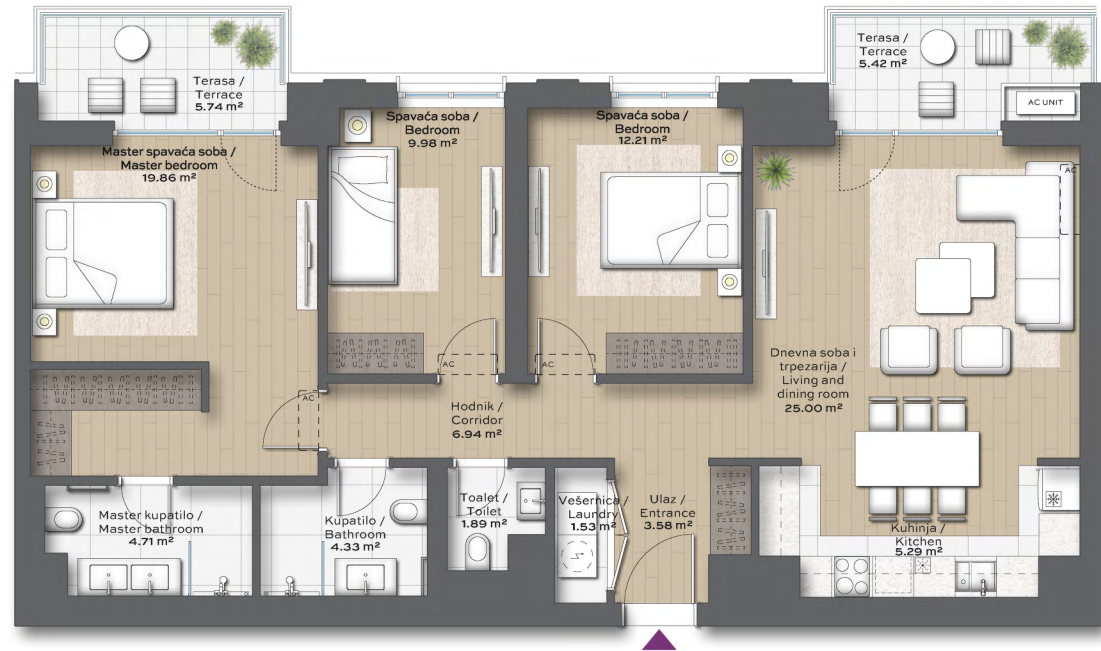
Oznaka stana / Apartment code: ALE-804

# BW ALEGRA

## Two and a Half Bedroom

Stan Br. Unit No. **805**

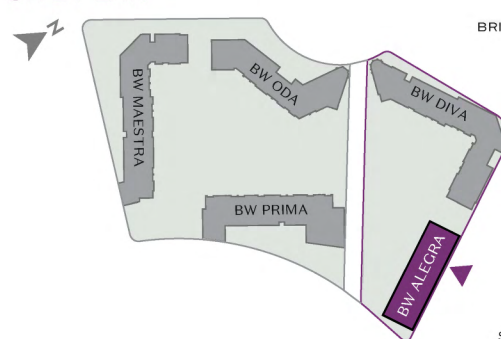
	DIMENZIJE DIMENSIONS
Površina Stana Apartment Area	95.32 m <sup>2</sup>
Površina Terase Terrace Area	11.16 m <sup>2</sup>
Ukupna Površina Total Area	106.48 m <sup>2</sup>



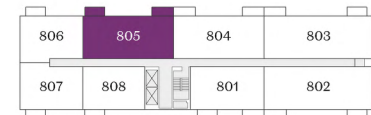
MASTER PLAN



SITE PLAN



LEVEL PLAN



Napomena: Svi materijali, dimenzije i crteži su okvirni. Kalkulacija površina unutrašnjeg i spoljašnjeg prostora urađena je u skladu sa važećim standardom (SRPS U.C2.100:2002) i predstavlja neto površinu stambene jedinice.

Disclaimer: All materials, dimensions and drawings are approximate. Calculation of internal and external area is fully compliant with local standards (SRPS U.C2.100:2002) and as such it represents the net area of the unit.

Oznaka stana / Apartment code: **ALE-805**