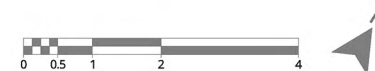
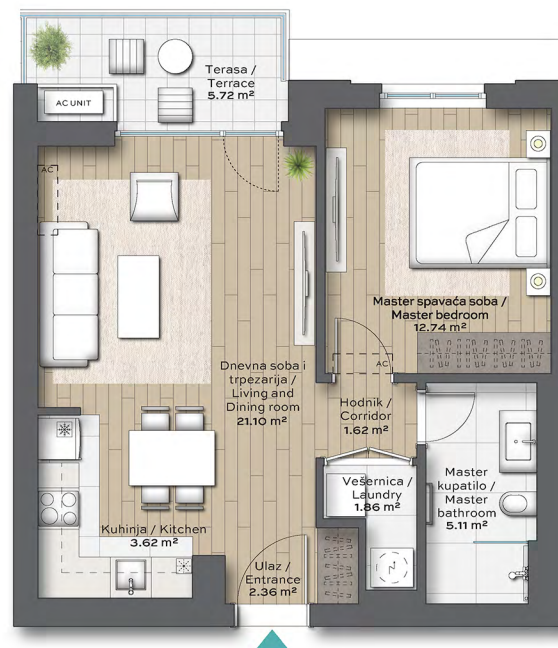


# BV DIVA

## One Bedroom

Stan Br. Unit No. **A111**

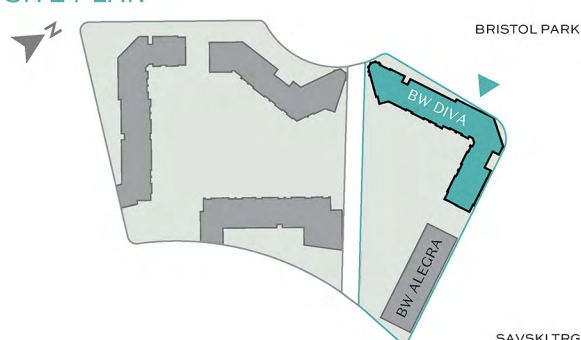
	DIMENZIJE DIMENSIONS
Površina Stana Apartment Area	48.40 m <sup>2</sup>
Površina Terase Terrace Area	5.72 m <sup>2</sup>
Ukupna Površina Total Area	54.12 m <sup>2</sup>



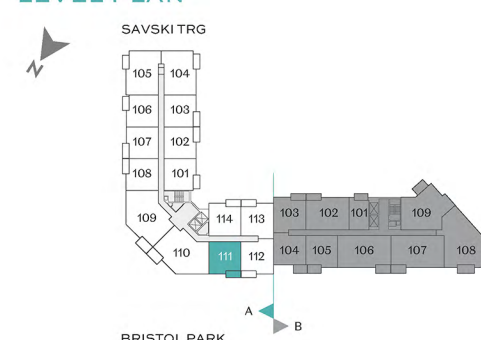
MASTER PLAN



SITE PLAN



LEVEL PLAN



Napomena: Svi materijali, dimenzije i crteži su okvirni. Kalkulacija površina unutrašnjeg i spoljašnjeg prostora urađena je u skladu sa važećim standardom (SRPS U.C2.100:2002) i predstavlja neto površinu stambene jedinice.

Disclaimer: All materials, dimensions and drawings are approximate. Calculation of internal and external area is fully compliant with local standards (SRPS U.C2.100:2002) and as such it represents the net area of the unit.

# BV DIVA

## Two and a Half Bedroom

Stan Br. Unit No. **A208**

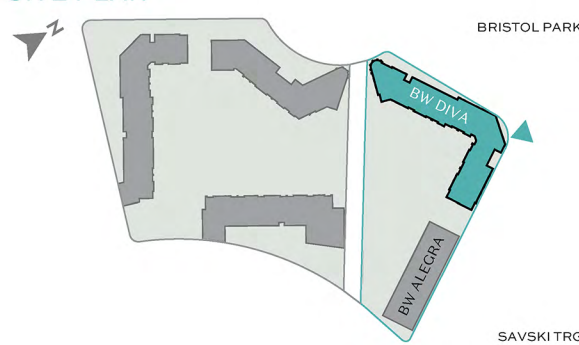
	DIMENZIJE DIMENSIONS
Površina Stana Apartment Area	90.80 m <sup>2</sup>
Površina Terase Terrace Area	8.31 m <sup>2</sup>
Ukupna Površina Total Area	99.11 m <sup>2</sup>



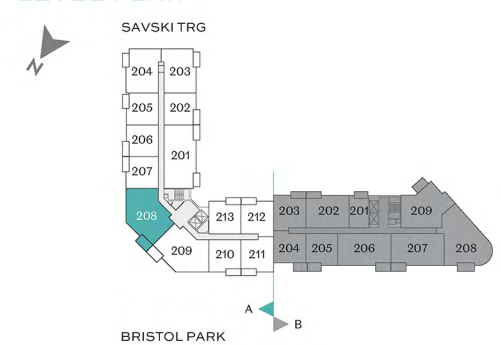
### MASTER PLAN



### SITE PLAN



### LEVEL PLAN



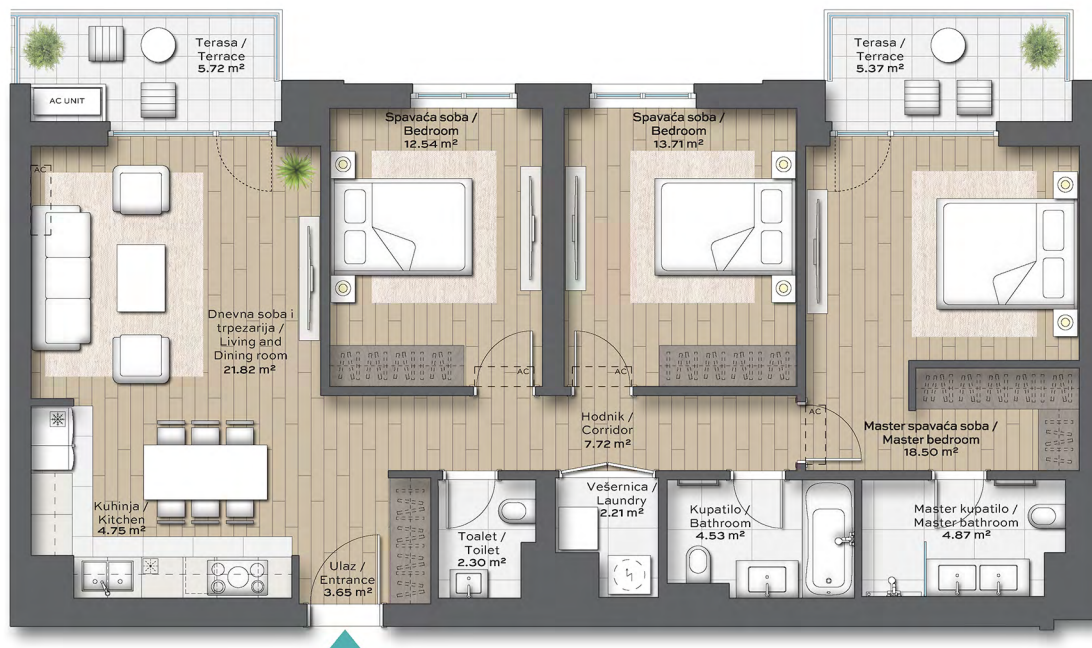
Napomena: Svi materijali, dimenzije i crteži su okvirni. Kalkulacija površina unutrašnjeg i spoljašnjeg prostora urađena je u skladu sa važećim standardom (SRPS U.C2.100:2002) i predstavlja neto površinu stambene jedinice.

Disclaimer: All materials, dimensions and drawings are approximate. Calculation of internal and external area is fully compliant with local standards (SRPS U.C2.100:2002) and as such it represents the net area of the unit.

# BW DIVA

## Three Bedroom Stan Br. Unit No. A401

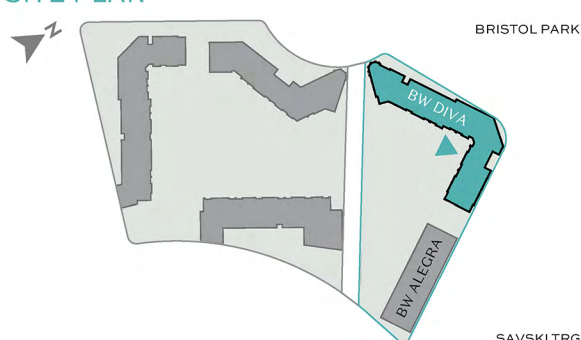
	DIMENZIJE DIMENSIONS
Površina Stana Apartment Area	96.58 m <sup>2</sup>
Površina Terase Terrace Area	11.08 m <sup>2</sup>
Ukupna Površina Total Area	107.66 m <sup>2</sup>



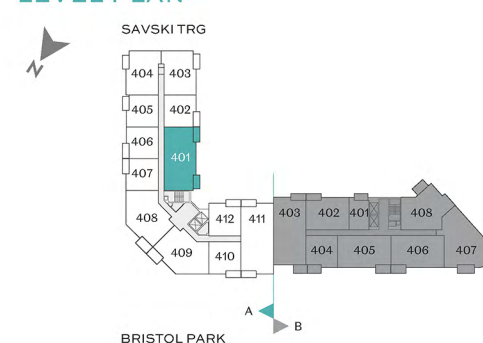
### MASTER PLAN



### SITE PLAN



### LEVEL PLAN



Napomena: Svi materijali, dimenzije i crteži su okvirni. Kalkulacija površina unutrašnjeg i spoljašnjeg prostora urađena je u skladu sa važećim standardom (SRPS U.C2.100:2002) i predstavlja neto površinu stambene jedinice.

Disclaimer: All materials, dimensions and drawings are approximate. Calculation of internal and external area is fully compliant with local standards (SRPS U.C2.100:2002) and as such it represents the net area of the unit.

# BV DIVA

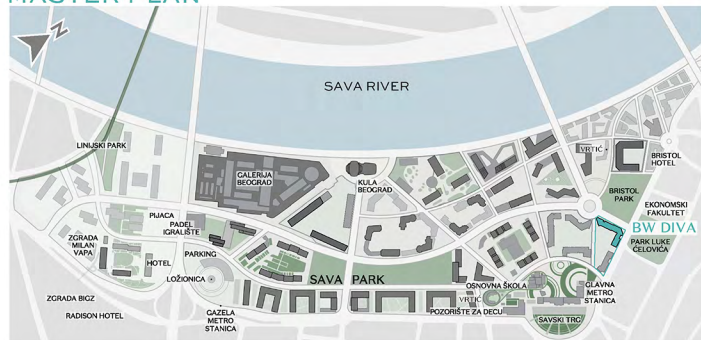
## Three Bedroom

Stan Br. Unit No. **A511**

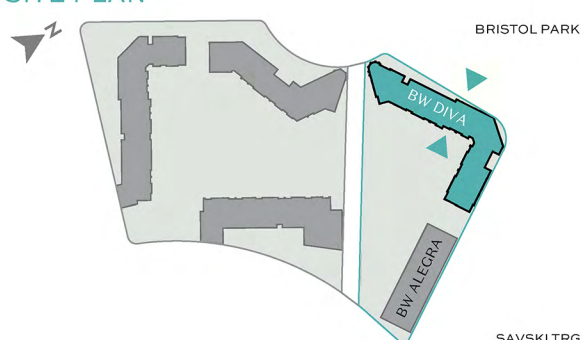
	DIMENZIJE DIMENSIONS
Površina Stana Apartment Area	110.64 m <sup>2</sup>
Površina Terase Terrace Area	11.44 m <sup>2</sup>
Ukupna Površina Total Area	122.08 m <sup>2</sup>



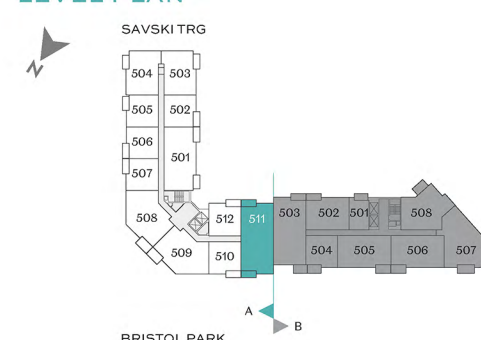
MASTER PLAN



SITE PLAN



LEVEL PLAN



Napomena: Svi materijali, dimenzije i crteži su okvirni. Kalkulacija površina unutrašnjeg i spoljašnjeg prostora urađena je u skladu sa važećim standardom (SRPS U.C2.100:2002) i predstavlja neto površinu stambene jedinice.

Disclaimer: All materials, dimensions and drawings are approximate. Calculation of internal and external area is fully compliant with local standards (SRPS U.C2.100:2002) and as such it represents the net area of the unit.

# BV DIVA

## One and a Half Bedroom

Stan Br. Unit No. **A603**

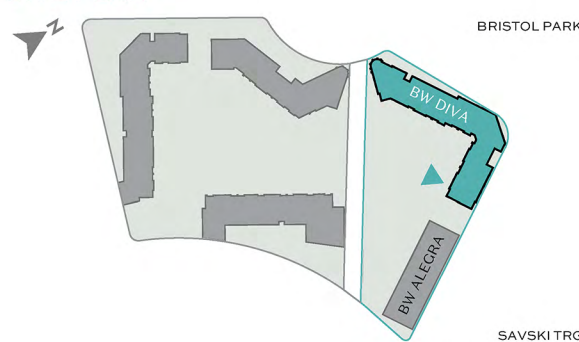
	DIMENZIJE DIMENSIONS
Površina Stana Apartment Area	68.33 m <sup>2</sup>
Površina Terasa Terrace Area	5.81 m <sup>2</sup>
Ukupna Površina Total Area	74.14 m <sup>2</sup>



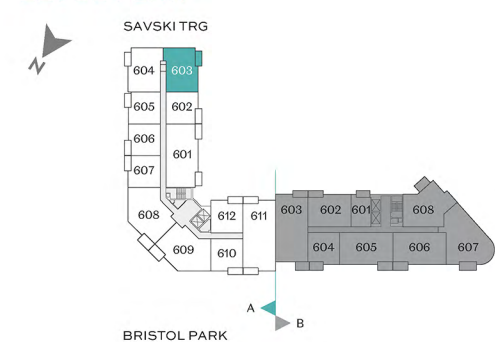
### MASTER PLAN



### SITE PLAN



### LEVEL PLAN



Napomena: Svi materijali, dimenzije i crteži su okvirni. Kalkulacija površina unutrašnjeg i spoljašnjeg prostora urađena je u skladu sa važećim standardom (SRPS U.C2.100:2002) i predstavlja neto površinu stambene jedinice.  
Disclaimer: All materials, dimensions and drawings are approximate. Calculation of internal and external area is fully compliant with local standards (SRPS U.C2.100:2002) and as such it represents the net area of the unit.