

Two Bedroom

Stan Br. Unit No. A507

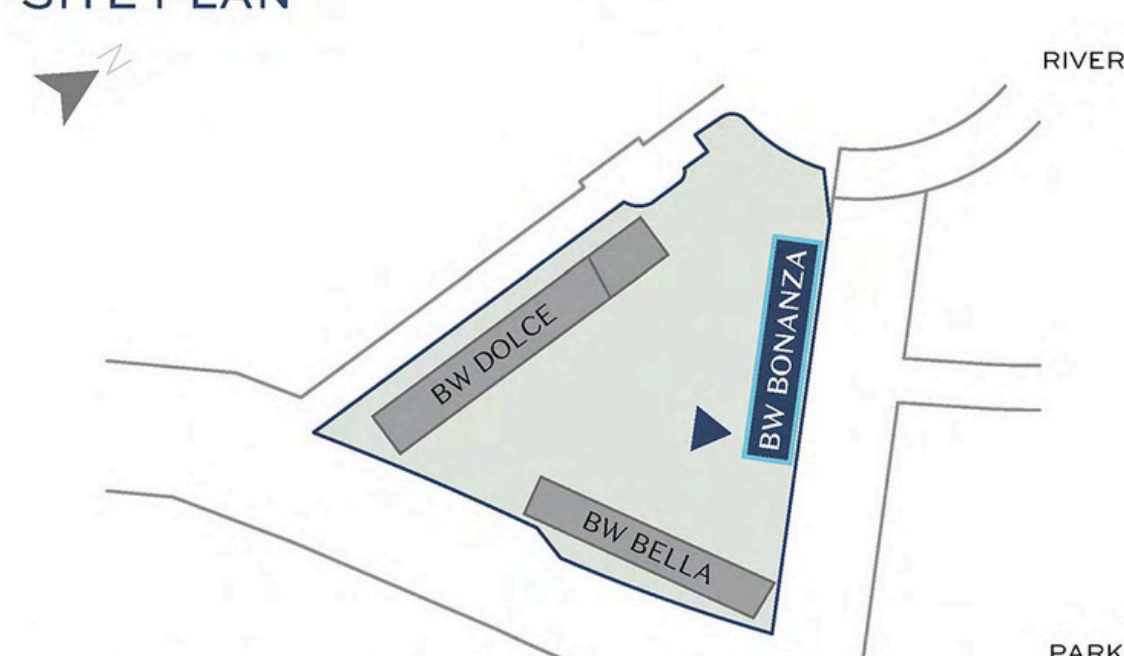
	DIMENZIJE DIMENSIONS
Površina Stana Apartment Area	91.84 m ²
Površina Terase Terrace Area	13.75 m ²
Ukupna Površina Total Area	105.59 m ²



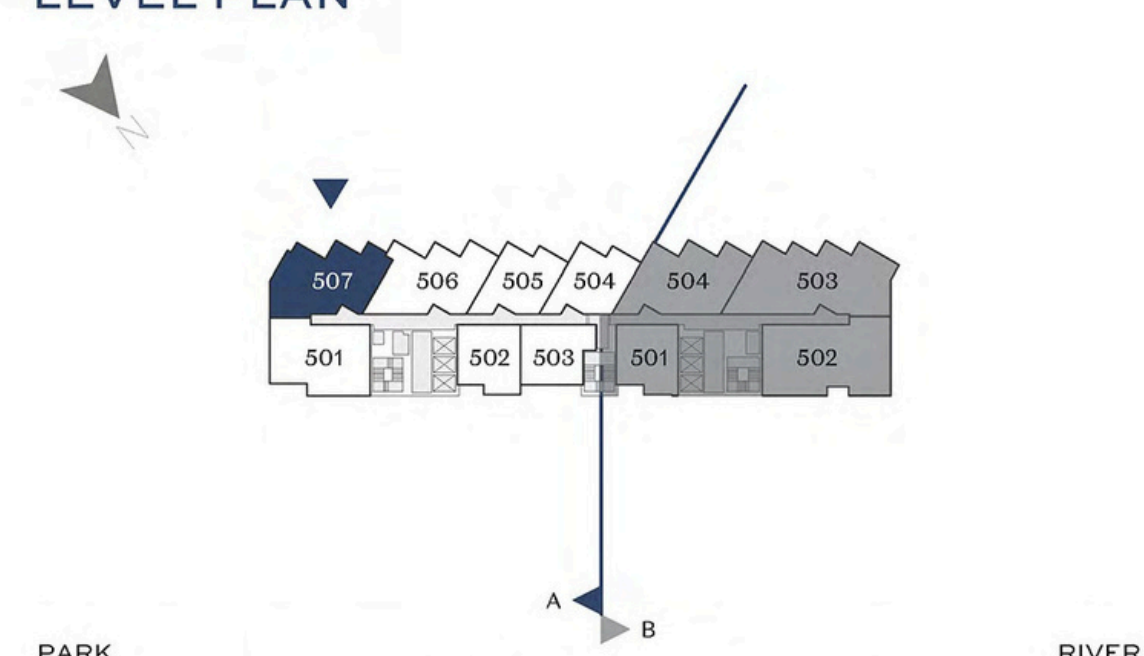
MASTER PLAN



SITE PLAN



LEVEL PLAN



Napomena: Svi materijali, dimenzije i crteži su okvirni. Kalkulacija površina unutrašnjeg i spoljašnjeg prostora urađena je u skladu sa važećim standardom (SRPS U.C2.100:2002) i predstavlja neto površinu stambene jedinice.
 Disclaimer: All materials, dimensions and drawings are approximate. Calculation of internal and external area is fully compliant with local standards (SRPS U.C2.100:2002) and as such it represents the net area of the unit.

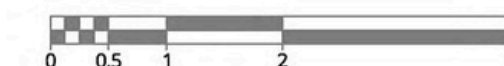
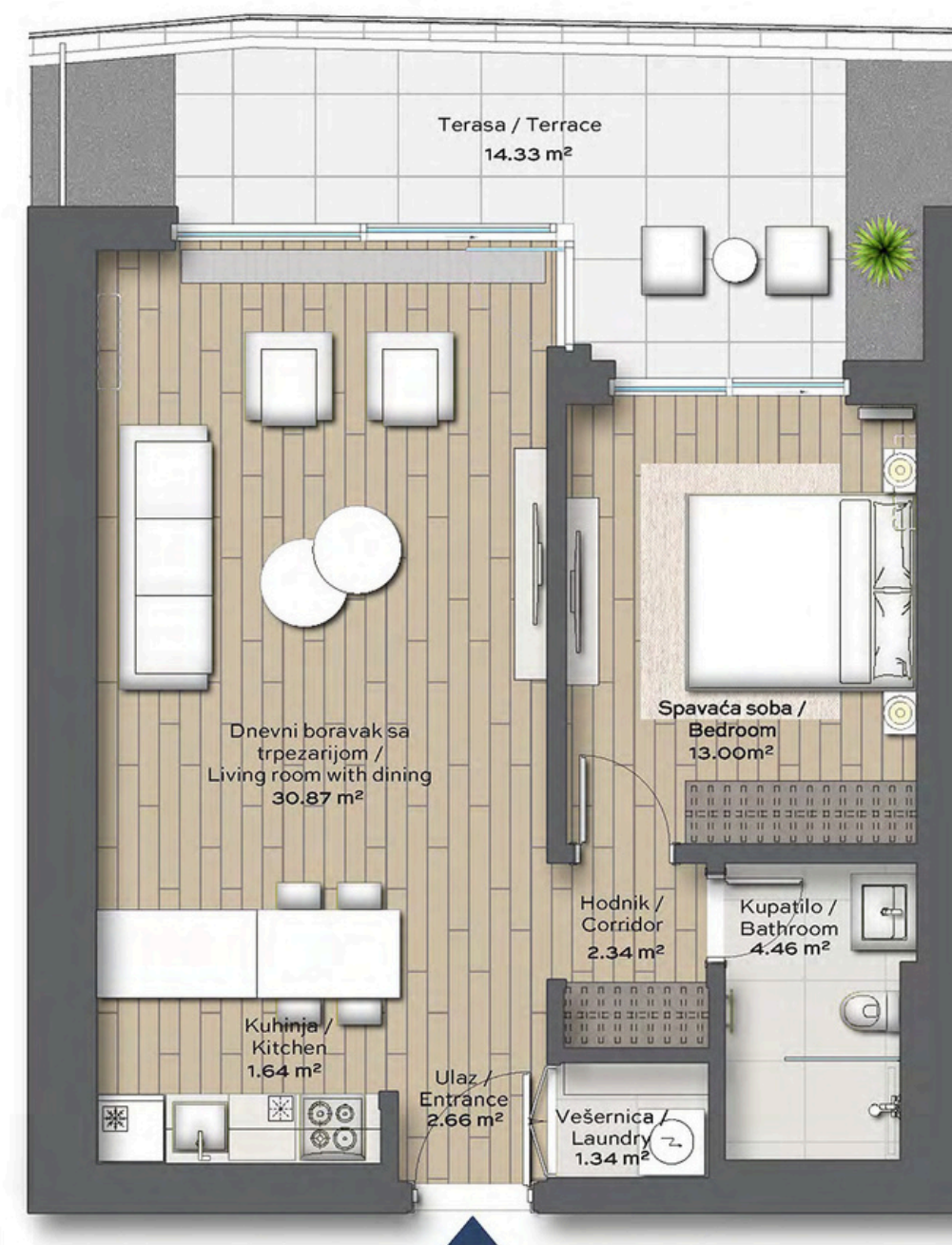
BV BONACA

One Bedroom

Stan Br. Unit No. A702

DIMENZIJE
DIMENSIONS

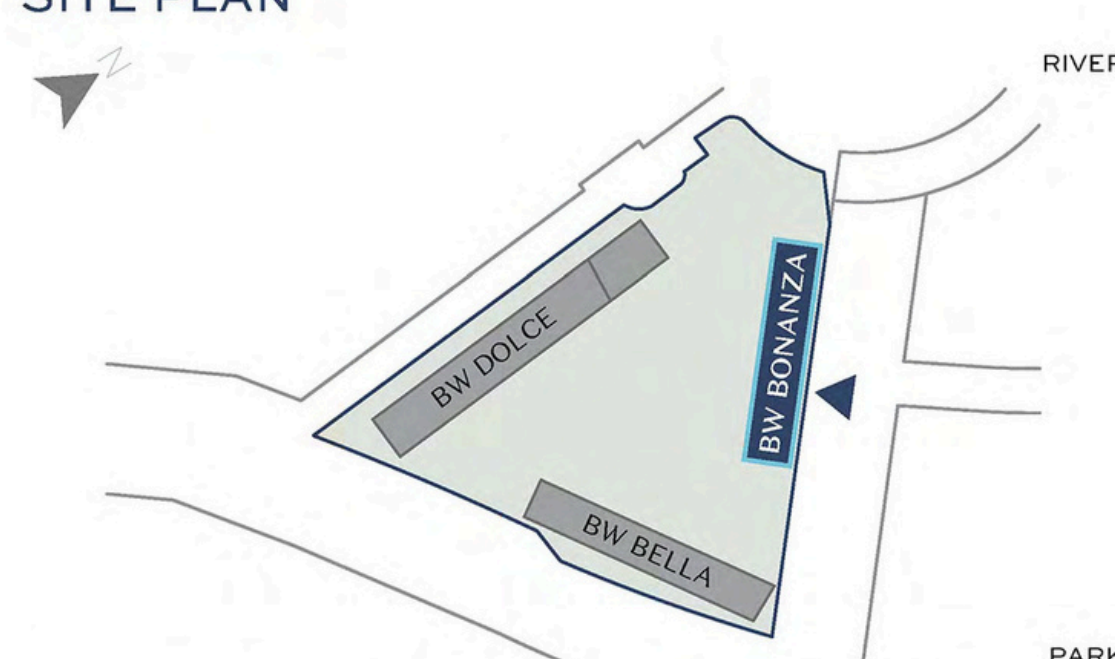
Površina Stana Apartment Area	56.31 m ²
Površina Terasa Terrace Area	14.33 m ²
Ukupna Površina Total Area	70.64 m ²



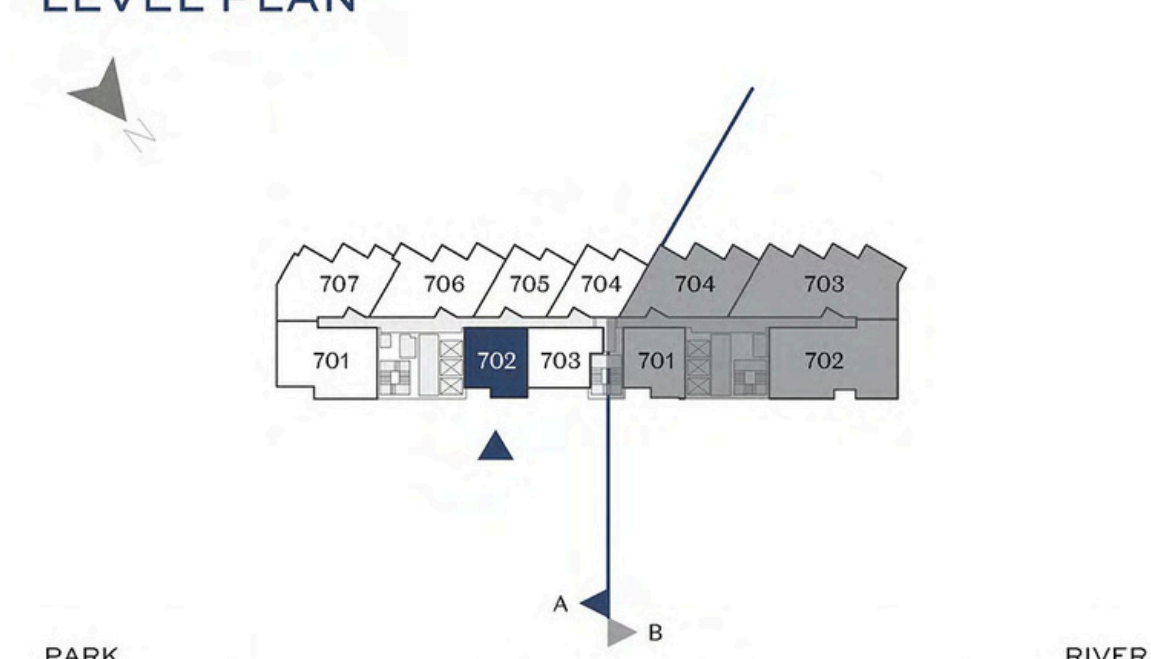
MASTER PLAN



SITE PLAN



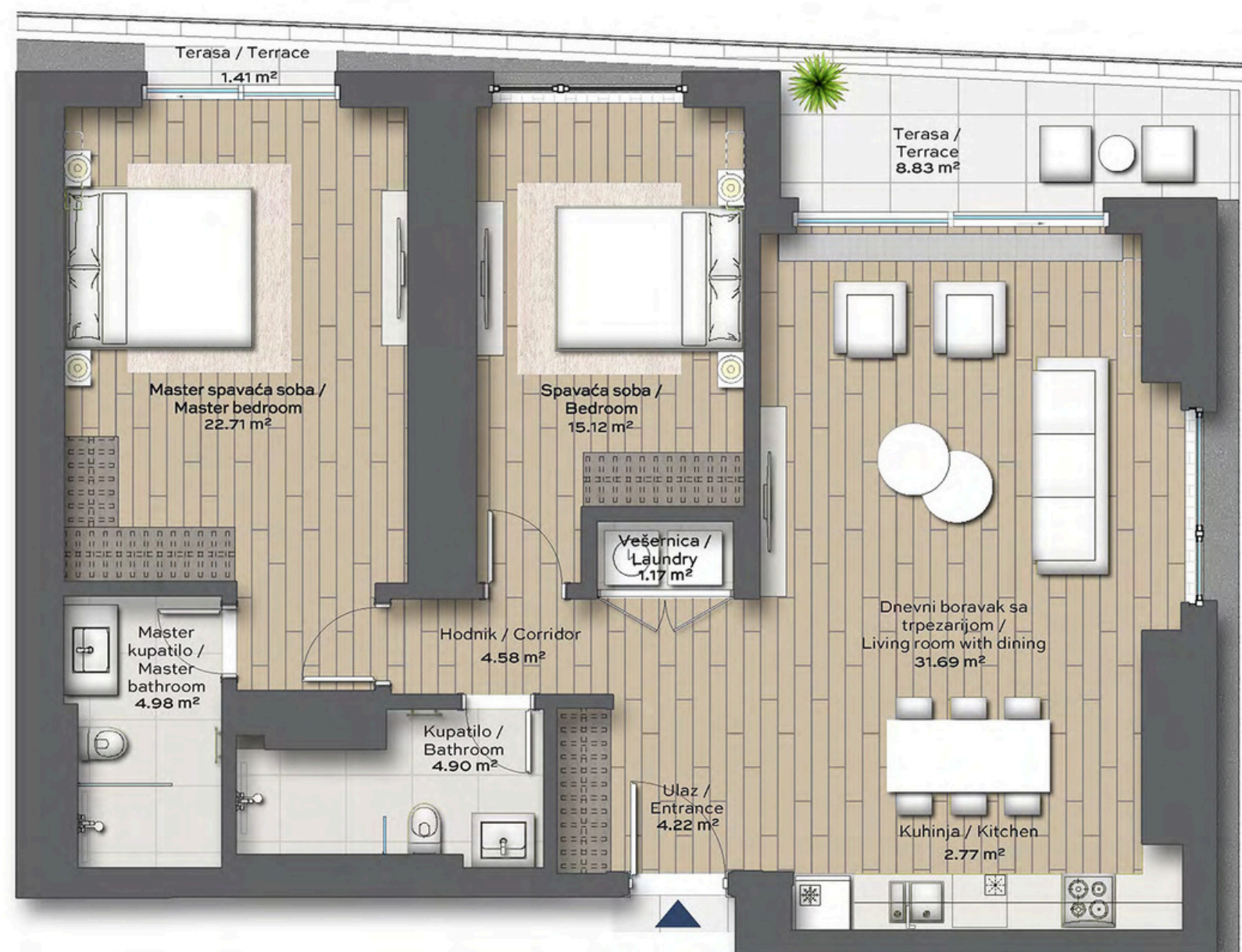
LEVEL PLAN



Napomena: Svi materijali, dimenzije i crteži su okvirni. Kalkulacija površina unutrašnjeg i spoljašnjeg prostora urađena je u skladu sa važećim standardom (SRPS U.C.2.100:2002) i predstavlja neto površinu stambene jedinice.
Disclaimer: All materials, dimensions and drawings are approximate. Calculation of internal and external area is fully compliant with local standards (SRPS U.C.2.100:2002) and as such it represents the net area of the unit.

Two Bedroom Stan Br. Unit No. A901

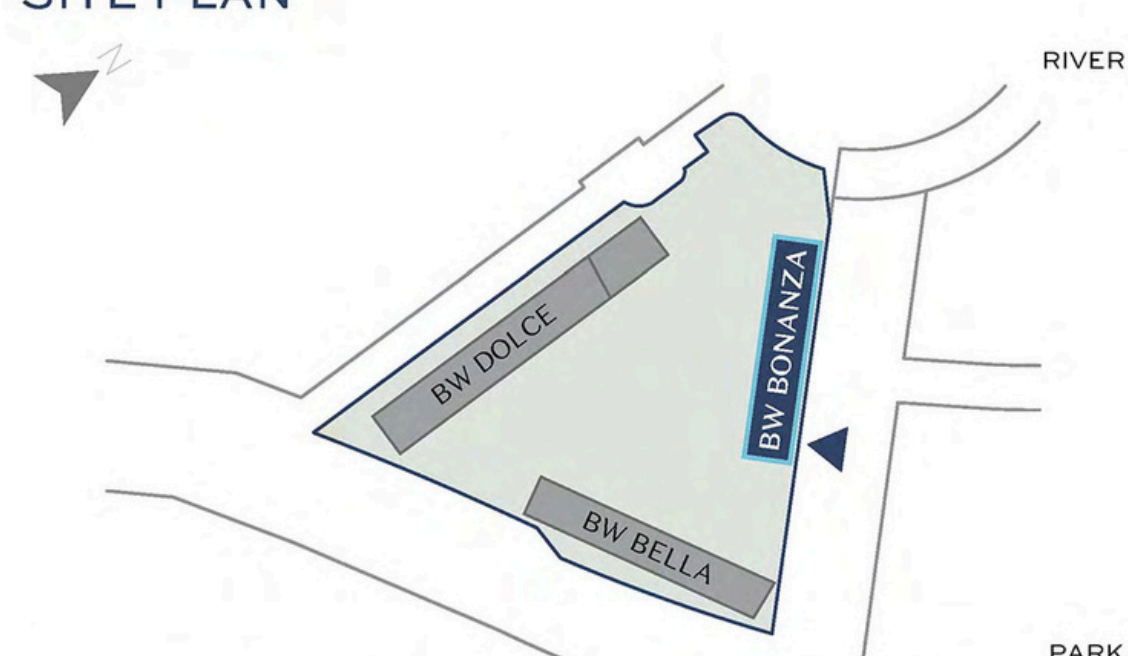
	DIMENZIJE DIMENSIONS
Površina Stana Apartment Area	92.14 m ²
Površina Terase Terrace Area	10.24 m ²
Ukupna Površina Total Area	102.38 m ²



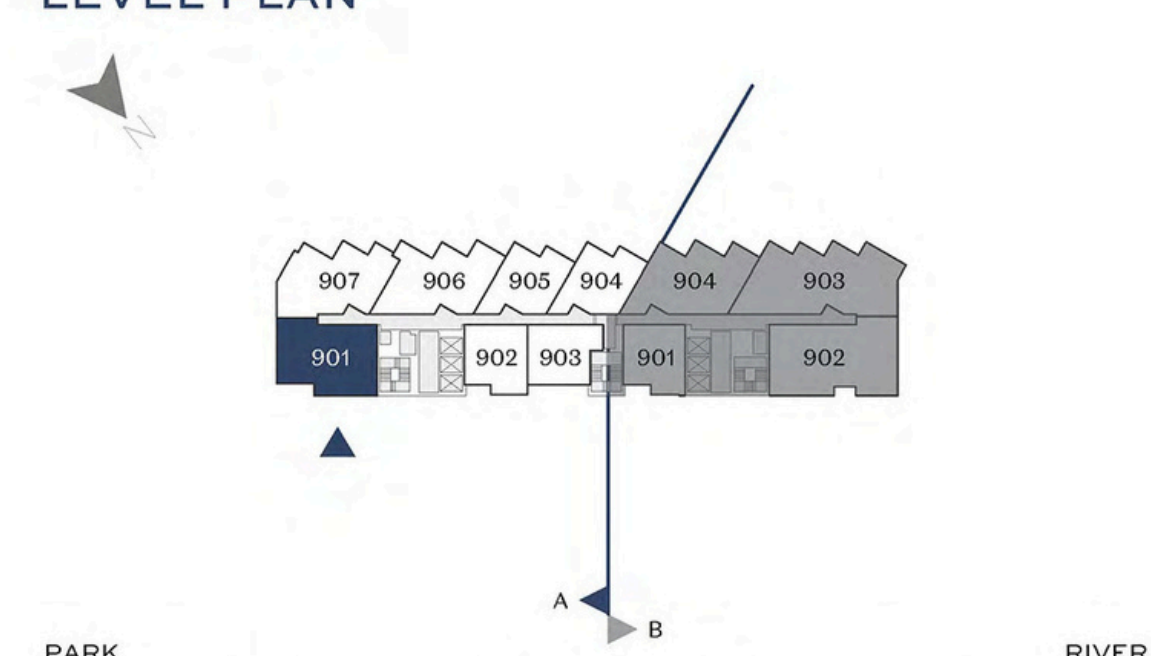
MASTER PLAN



SITE PLAN



LEVEL PLAN



Napomena: Svi materijali, dimenzije i crteži su okvirni. Kalkulacija površina unutrašnjeg i spoljašnjeg prostora urađena je u skladu sa važećim standardom (SRPS U.C.2.100:2002) i predstavlja neto površinu stambene jedinice.
Disclaimer: All materials, dimensions and drawings are approximate. Calculation of internal and external area is fully compliant with local standards (SRPS U.C.2.100:2002) and as such it represents the net area of the unit.

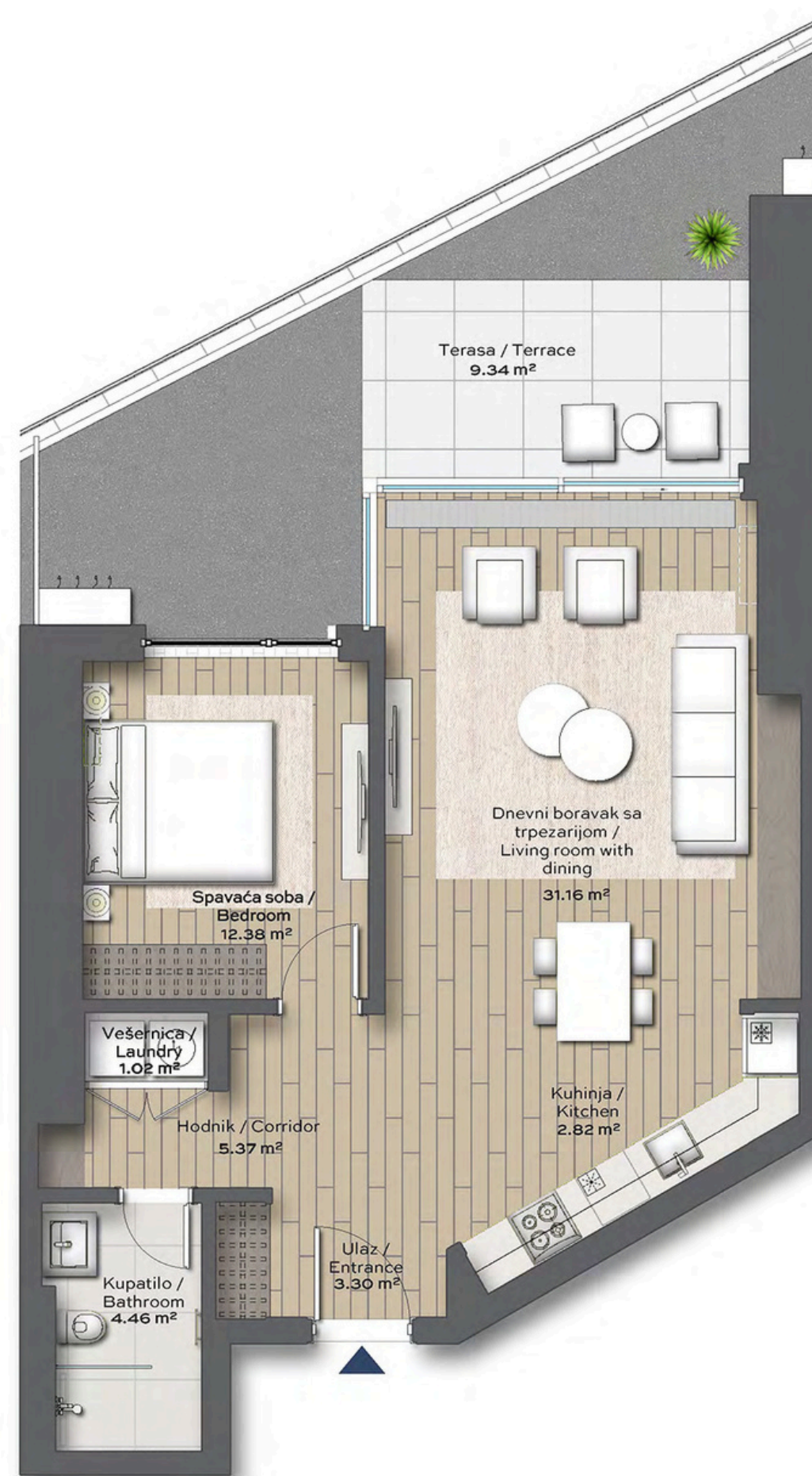
BV BONACA

One Bedroom

Stan Br. Unit No. A1004

DIMENZIJE
DIMENSIONS

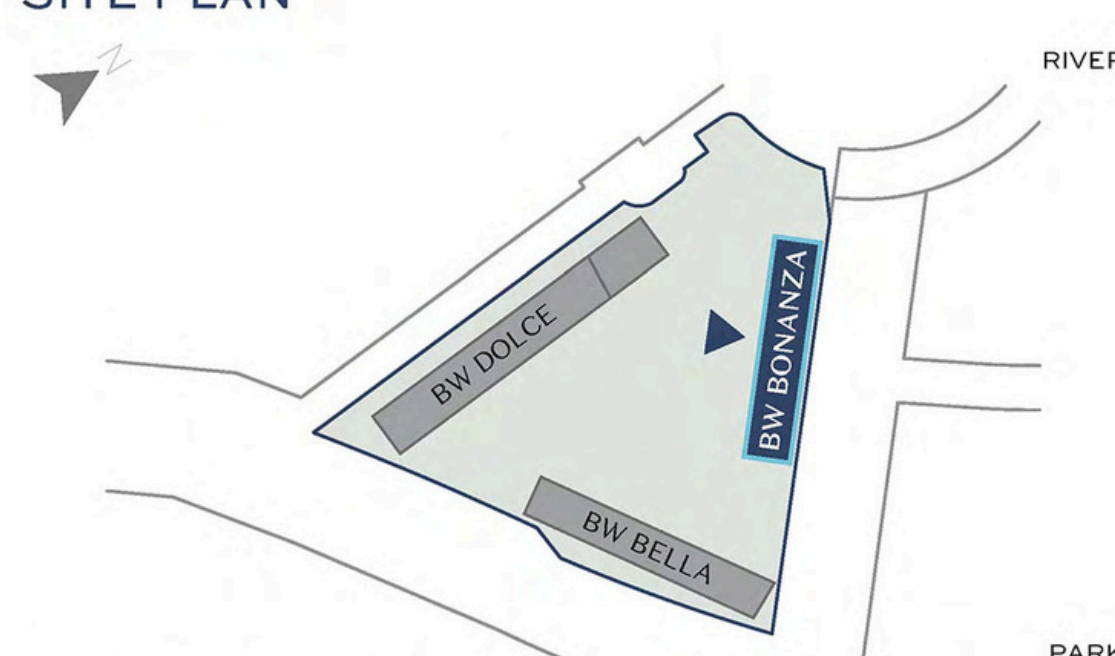
Površina Stana Apartment Area	60.50 m ²
Površina Terasa Terrace Area	9.34 m ²
Ukupna Površina Total Area	69.84 m ²



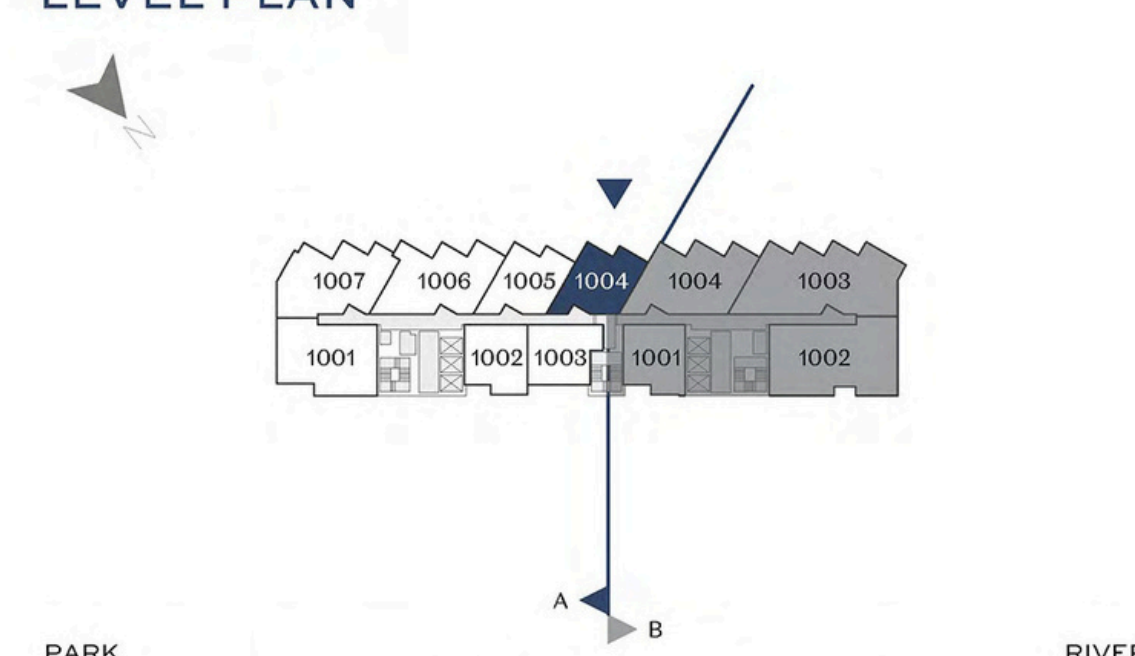
MASTER PLAN



SITE PLAN



LEVEL PLAN



Napomena: Svi materijali, dimenzije i crteži su okvirni. Kalkulacija površina unutrašnjeg i spoljašnjeg prostora urađena je u skladu sa važećim standardom (SRPS U.C.2.100:2002) i predstavlja neto površinu stambene jedinice.
Disclaimer: All materials, dimensions and drawings are approximate. Calculation of internal and external area is fully compliant with local standards (SRPS U.C.2.100:2002) and as such it represents the net area of the unit.

Three Bedroom Stan Br. Unit No. B1704

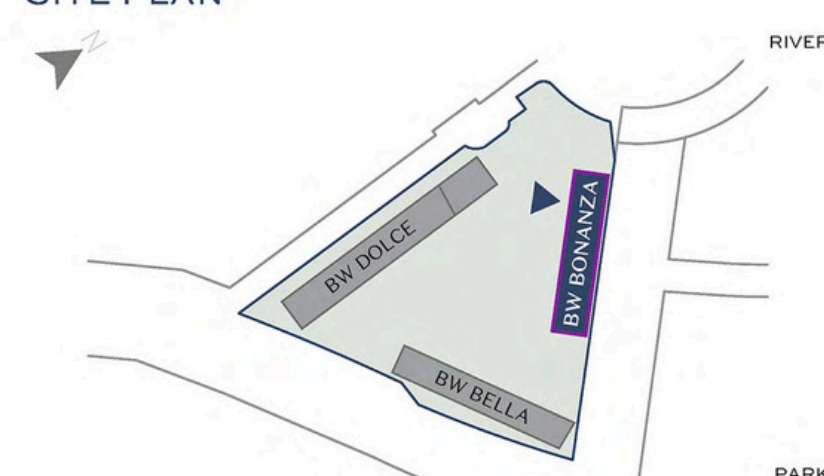
	DIMENZIJE DIMENSIONS
Površina Stana Apartment Area	119.25 m ²
Površina Terasa Terrace Area	18.08 m ²
Ukupna Površina Total Area	137.33 m ²



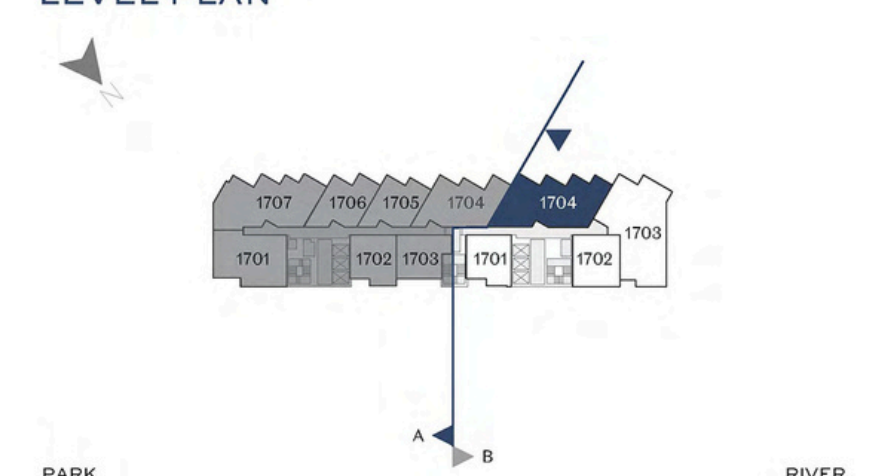
MASTER PLAN



SITE PLAN



LEVEL PLAN



Three Bedroom Stan Br. Unit No. A1902

	DIMENZIJE DIMENSIONS
Površina Stana Apartment Area	209.80 m ²
Površina Terase Terrace Area	38.51 m ²
Ukupna Površina Total Area	248.31 m ²

